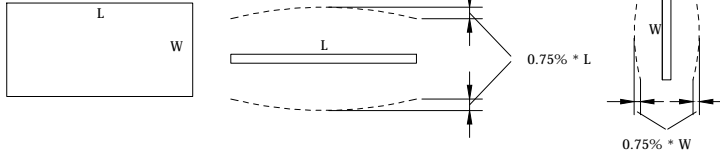


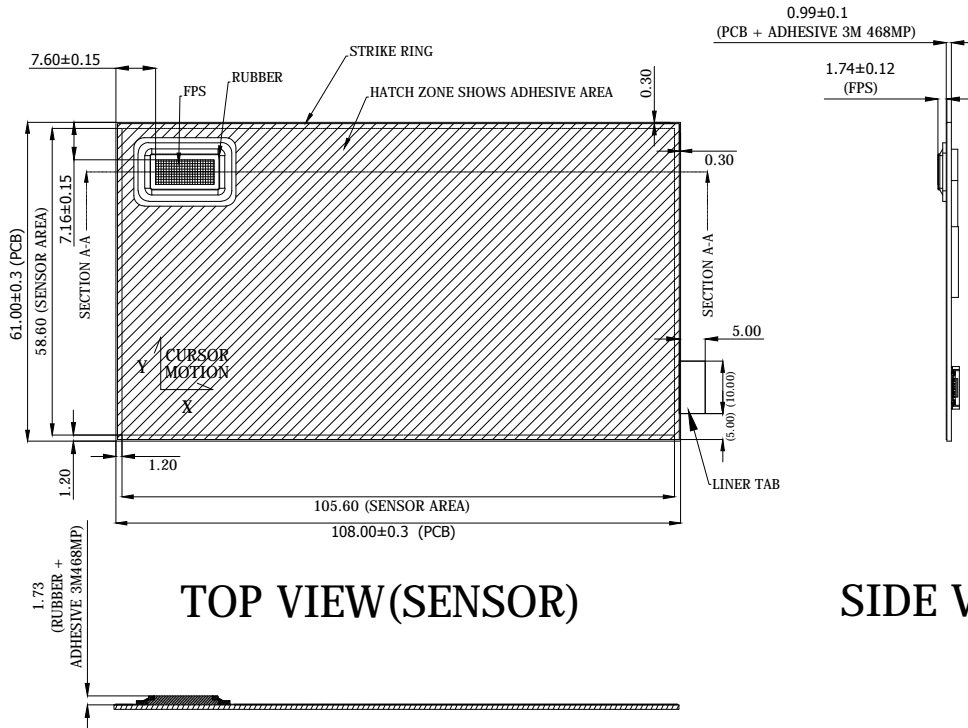
SYNAPTICS INCORPORATED CONFIDENTIAL AND PROPRIETARY. THIS INFORMATION MAY NOT BE REPRODUCED, DISTRIBUTED, OR MODIFIED WITHOUT SYNAPTICS' WRITTEN PERMISSION. THIS INFORMATION IS PROVIDED AS-IS, WITH NO EXPRESS OR IMPLIED WARRANTIES, AND WITH NO EXPRESS OR IMPLIED LICENSES TO ANY INTELLECTUAL PROPERTY RIGHTS.

REVISIONS			
REV.	DESCRIPTION	DRAWN	DATE
1	INITIAL RELEASE	BARRY LIN	03/08/16
2	CHANGE RUBBER RING SHAPE	BARRY LIN	03/28/16

CONTROLLABLE DEFORMATION:
0.75% * L OR W
FOLLOW 526-000276-01
INSPECTION



J2 FPC/FFC CONNECTOR
6PINS, 0.5 PITCH
BOTTOM CONTACT
GOLD PLATING
P-TWO , 196243-06041-3
H=1.05±0.1MM.
SYNA P/N : 250-001366-01



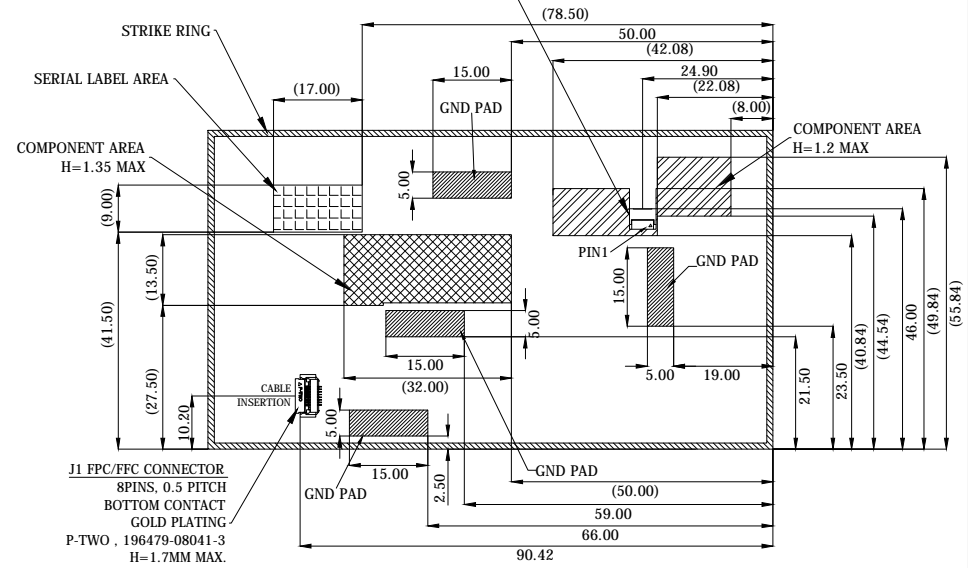
TOP VIEW(SENSOR)

SECTION A-A

NOTES:

1. PCB MATERIAL: FR4, 0.86MM (+/-0.1) THICK.
2. FACE SHEET MATERIAL IS PLASTIC , 1.6MM THICK.
3. ADHESIVE : 3M468MP , 0.13MM THICK.
4. PCBA WARPAGE FOLLOW SPECIFICATION WHICH SHOULD NOT EXCEED 0.75% OF PCB LENGTH. FOR MORE DETAILS PLEASE REFER TO 526-000276-01.

SIDE VIEW



BOTTOM VIEW (COMPONENT)

J1 PIN ASSIGNMENT:

- PIN1 : VCC (3.3V)
- PIN2 : PS2-CLK
- PIN3 : PS2-DAT
- PIN4 : SW_L
- PIN5 : SW_R
- PIN6 : GND
- PIN7 : SMB-CLK
- PIN8 : SMB-DAT

J2 PIN ASSIGNMENT:

- PIN1 : VDD_USB
- PIN2 : VDD
- PIN3 : GND
- PIN4 : GND
- PIN5 : D-
- PIN6 : D+

UNLESS OTHERWISE SPECIFIED DIMENSIONS ARE MILLIMETERS TOLERANCES ARE:			
DECIMALS ± 0.30	ANGLES ± 1°		
THIRD ANGLE PROJECTION		DESCRIPTION SPEC DWG , TM-03261	
DRAWN BY BARRY LIN	SIZE B	DWG. NO. 515-002637-01	REV 2
DOC. NO: 534-000210-01 REV. D	SCALE 1:1	CAD GENERATED DRAWING DO NOT SCALE	SHEET 1 OF 1